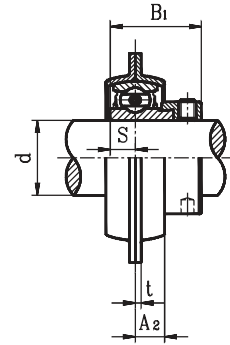
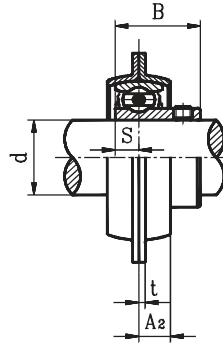
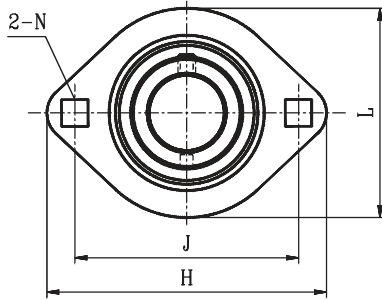




## PRESSED - STEEL OVAL FLANGE UNITS



**SBPFL2**  
Setscrew Type

**SAPFL2**  
Eccentric Locking Collar Type

Unit No.	Shaft Dia.		Dimensions (mm)								Bolt Size		Bearing No.	Housing No.	Mass (kg)
	d		H	J	A2	L	N	t	S	B					
	(in.)	(mm)													
SBPFL201 201-8 202 202-10 203 203-11	1/2 5/8 11/16	12 15 17	81	63.5	7	59	7.5	2	6	22	M6	1/4	SB201 201-8 202 202-10 203 203-11	PFL203	0.2
SBPFL204-12 204	3/4	20	90	71.5	8	67	9	2	7	25	M8	5/16	SB204-12 204	PFL204	0.24
SBPFL205-14 205-15 205 205-16	7/8 15/16 1	25	95	76	9	71	9	2	7.5	27	M8	5/16	SB205-14 205-15 205 205-16	PFL205	0.38
SBPFL206-18 206 206-19 206-20	1-1/8 1-3/16 1-1/4	30	113	90.5	9	84	10.5	2.5	8	30	M10	3/8	SB206-18 206 206-19 206-20	PFL206	0.38
SBPFL207-20 207-21 207-22 207 207-23	1-1/4 1-5/16 1-3/8 1-7/16	35	122	100	10	94	10.5	2.5	8.5	32	M10	3/8	SB207-20 207-21 207-22 207 207-23	PFL207	0.64
SBPFL208-24 208-25 208	1-1/2 1-9/16	40	148	119	12	100	13.5	3.5	9	34	M12	1/2	SB208-24 208-25 208	PFL208	0.8

Unit No.	Shaft Dia.		Dimensions (mm)								Bolt Size		Bearing No.	Housing No.	Mass (kg)
	d		H	J	A2	L	N	t	S	B <sub>1</sub>					
	(in.)	(mm)													
SAPFL 201 201-8 202 202-10 203 203-11	1/2 5/8 11/16	12 15 17	81	63.5	7	59	7.5	2	6.5	28.6	M6	1/4	SA201 201-8 202 202-10 203 203-11	PFL203	0.22
SAPFL 204-12 204	3/4	20	90	71.5	8	67	9	2	7.5	30.9	M8	5/16	SA204-12 204	PFL204	0.25
SAPFL 205-14 205-15 205 205-16	7/8 15/16 1	25	95	76	9	71	9	2	7.5	30.9	M8	5/16	SA205-14 205-15 205 205-16	PFL205	0.32
SAPFL 206-18 206 206-19 206-20	1-1/8 1-3/16 1-1/4	30	113	90.5	9	84	10.5	2.5	9	35.7	M10	3/8	SA206-18 206 206-19 206-20	PFL206	0.41
SAPFL 207-20 207-21 207-22 207 207-23	1-1/4 1-5/16 1-3/8 1-7/16	35	122	100	10	94	10.5	2.5	9.5	38.9	M10	3/8	SA207-20 207-21 207-22 207 207-23	PFL207	0.69
SAPFL208-24 208-25 208	1-1/2 1-9/16	40	148	119	12	100	13.5	3.5	11	43.7	M12	1/2	SA208-24 208-25 208	PFL208	1.0