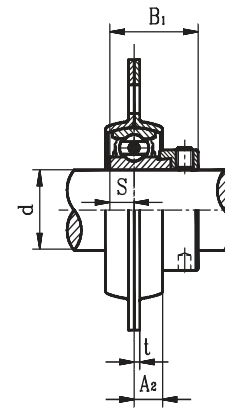
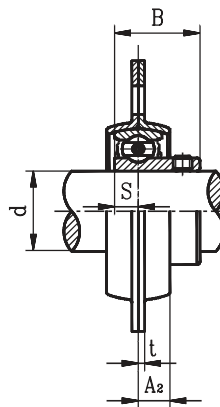
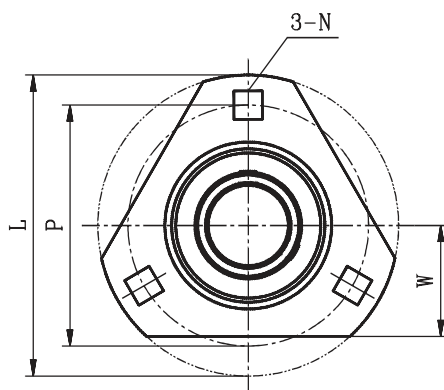




PRESSED HOUSING FLANGE UNITS(PFT TYPE)



SBPFT2
Setscrew type

SAPFT2
Eccentric locking collar type

Unit No.	Shaft Dia.		Dimensions (mm)								Bolt size		Bearing No.	Housing No.	Mass (kg)
	d		L	P	A ₂	t	N	W	S	B					
	(in.)	(mm)													
SBPFT201 201-8 202 202-10 203 203-11	1/2 5/8 11/16	12 15 17	82	64	7	2	7.5	29	6	22	1/4	M6	SB201 201-8 202 202-10 203 203-11	PFT203	0.27 0.27 0.26
SBPFT204-12 204	3/4	20	91	71	8	2	9	33	7	25	5/16	M8	SB204-12 204	PFT204	0.3
SBPFT205-14 205-15 205 205-16	7/8 15/16 1	25	95	76	9	2	9	35	7.5	27	5/16	M8	SB205-14 205-15 205 205-16	PFT205	0.38
SBPFT206-18 206 206-19 206-20	1-1/8 1-3/16 1-1/4	30	113	90	9	2.5	10.5	38	8	30	3/8	M10	SB206-18 206 206-19 206-20	PFT206	0.62
SBPFT207-20 207-21 207-22 207 207-23	1-1/4 1-5/16 1-3/8 1-7/16	35	122	100	10	2.5	10.5	45	8.5	32	3/8	M10	SB207-20 207-21 207-22 207 207-23	PFT207	0.82

Unit No.	Shaft Dia.		Dimensions (mm)								Bolt size		Bearing No.	Housing No.	Mass (kg)
	d		L	P	A ₂	t	N	W	S	B ₁					
	(in.)	(mm)													
SAPFT201 201-8 202 202-10 203 203-11	1/2 5/8 11/16	12 15 17	82	64	7	2	7.5	29	6.5	28.6	1/4	M6	SA201 201-8 202 202-10 203 203-11	PFT203	0.29 0.29 0.28
SAPFT204-12 204	3/4	20	91	71	8	2	9	33	7.5	30.9	5/16	M8	SA204-12 204	PFT204	0.31
SAPFT205-14 205-15 205 205-16	7/8 15/16 1	25	95	76	9	2	9	35	7.5	30.9	5/16	M8	SA205-14 205-15 205 205-16	PFT205	0.41
SAPFT206-18 206 206-19 206-20	1-1/8 1-3/16 1-1/4	30	113	90	9	2.5	10.5	38	9	35.7	3/8	M10	SA206-18 206 206-19 206-20	PFT206	0.67
SAPFT207-20 207-21 207-22 207 207-23	1-1/4 1-5/16 1-3/8 1-7/16	35	122	100	10	2.5	10.5	45	9.5	38.9	3/8	M10	SA207-20 207-21 207-22 207 207-23	PFT207	0.87