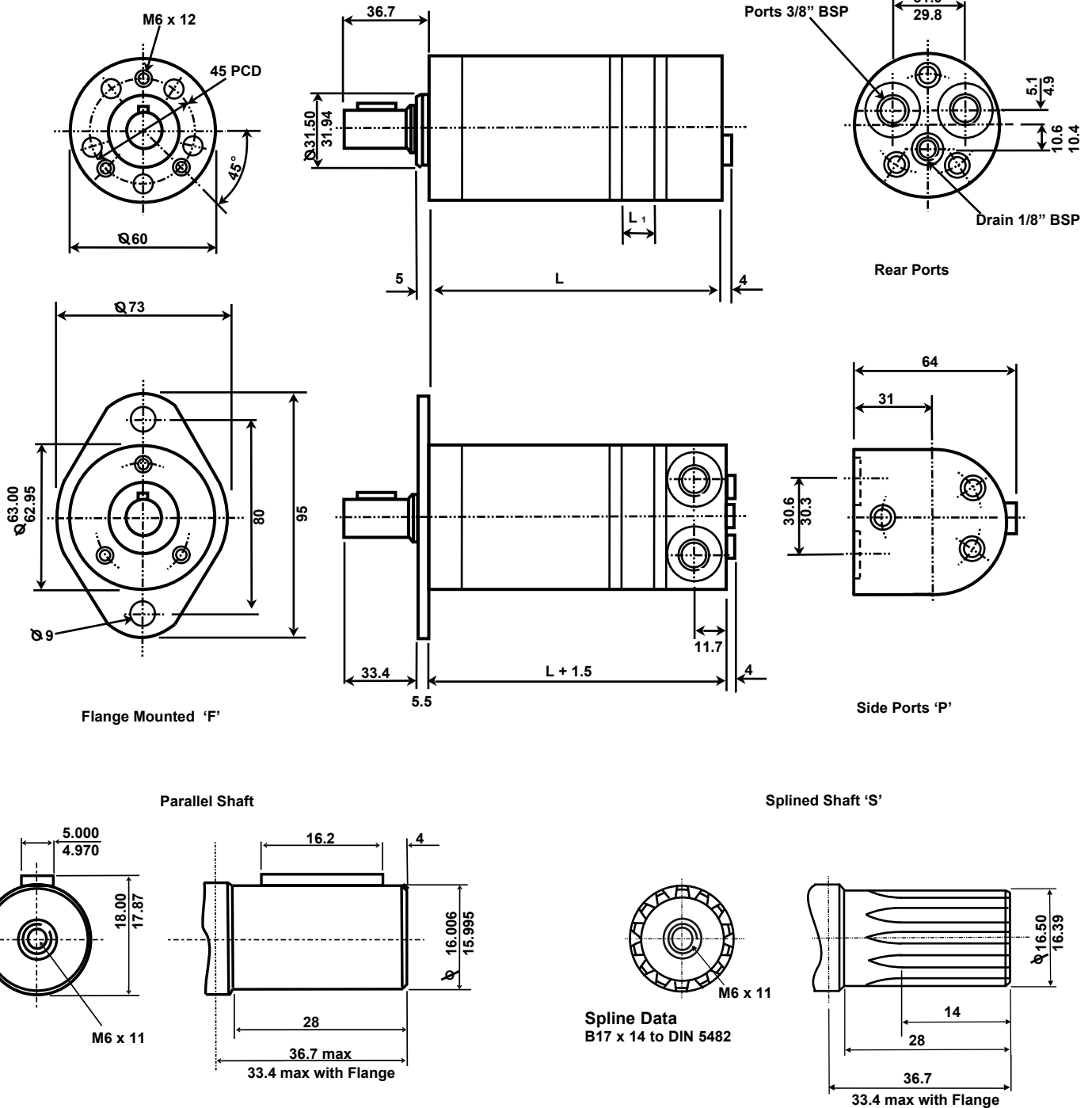


AMM

HYDRAULIC MOTOR HIGH TORQUE - LOW SPEED

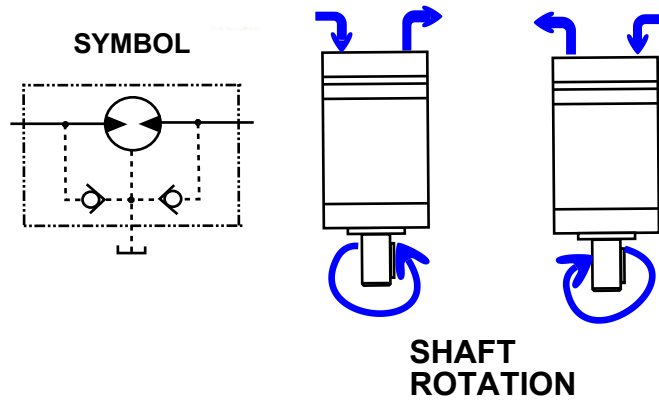
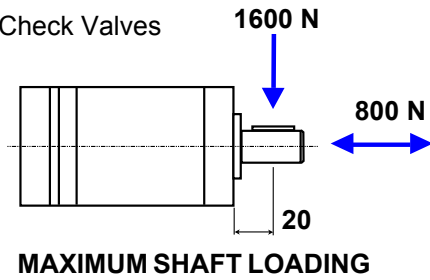


MOTOR SIZE		AMM 8	AMM 12.5	AMM 20	AMM 32	AMM 50
DIM	mm	104	106	109	114	121.5
DIM L1	mm	3.5	5.5	8.5	13.5	21.0
WEIGHT	kg	1.9	2.0	2.1	2.2	2.5

ADAN HYDRAULIC MOTOR AMM SERIES

CONSTRUCTIONAL FEATURES

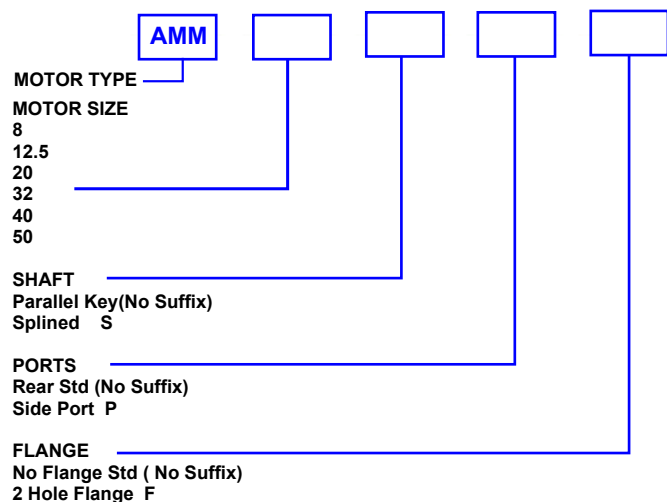
- Fully Reversible
- Shaft Options
- Integral Check Valves



AMM SIZE	DISPLACEMENT		MAXIMUM PRESSURE DROP				MAXIMUM SPEED	
	cc/rev	cu.in/rev	lbf/in ²		bar		rpm	
			cont.	int.	cont.	int.	cont.	int.
8	8.2	0.50	1500	2000	100	140	1950	2450
12.5	12.9	0.79	1500	2000	100	140	1550	1940
20	19.9	1.24	1500	2000	100	140	1000	1250
32	31.5	1.93	1500	2000	100	140	630	800
40	40.0	2.43	1160	1595	80	110	500	625
50	50.3	3.08	1000	1300	70	90	400	500

MAXIMUM RETURN PRESSURE WITHOUT DRAIN LINE. OR MAXIMUM DRAIN LINE PRESSURE. bar.	SPEED rpm	AMM 08	AMM 12.5	AMM 20	AMM 32	AMM 40	AMM 50
	cont. 0 - 100		140	140	140	140	140
cont. 100 - 400		100	100	100	100	100	100
cont. 400 - 800		50	50	50	50	50	-
cont. > - 800		20	20	20	-	-	-
int. 0 - max		140	140	140	140	140	140

ORDERING CODE



Max inlet pressure 2500 psi 170 bar continuous

Intermittent operation = 10% of every minute

Maximum pressure drop and maximum speed must not occur simultaneously, at speeds lower than 50 rpm please consult our Technical Department.

Mineral based hydraulic fluids with anti-wear additives are recommended with a viscosity of 35 cts at operating Temperature.

Where non-flammable fluids are to be used it is advisable to consult our Technical Department.

Normal operating temperature 30° to 60° C.

The policy of Adan Limited is one of continual development and the right is reserved to alter specifications without notice.



ADAN LIMITED

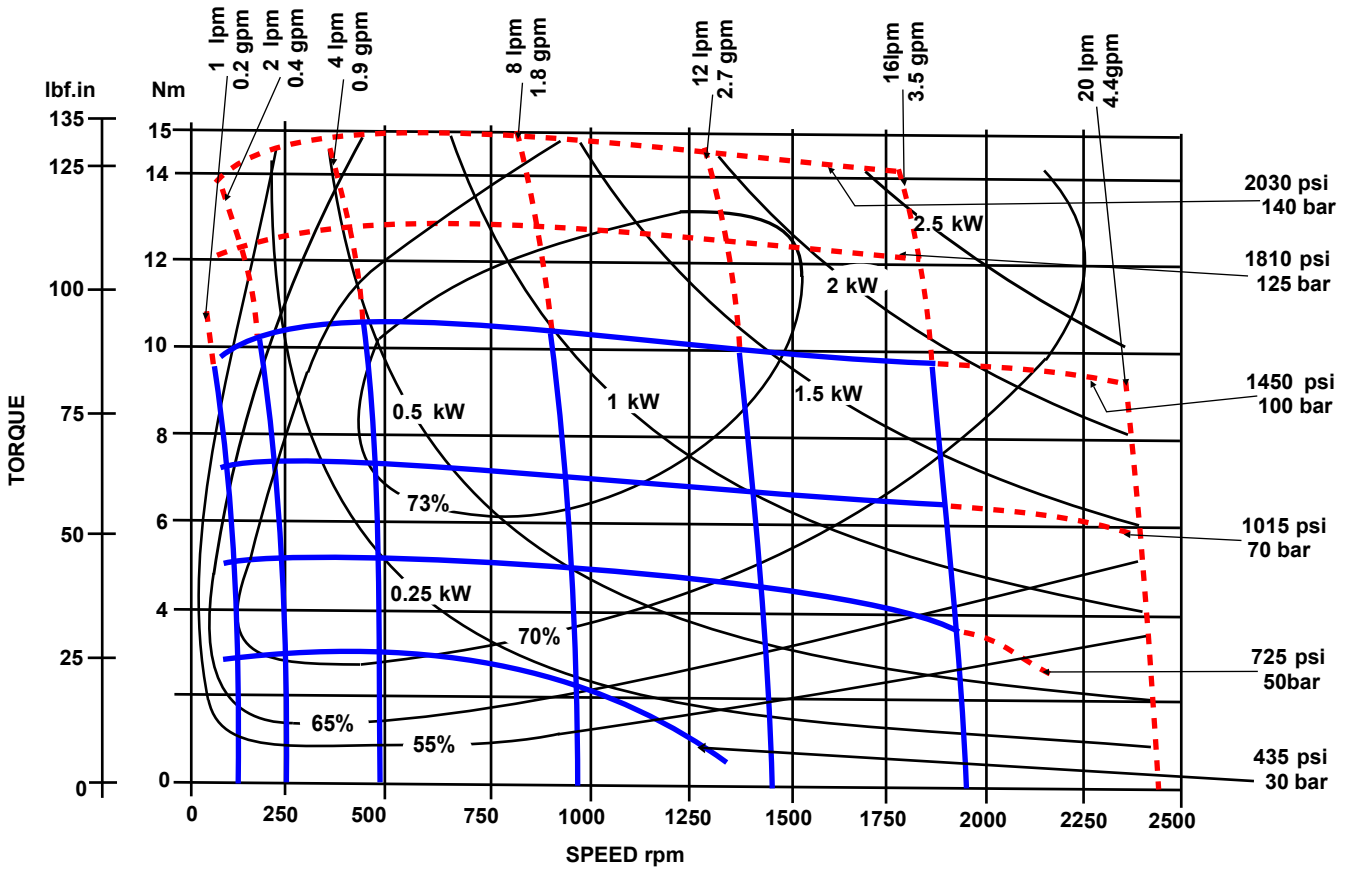
RIVERSIDE IND. ESTATE BOSTON LINCOLNSHIRE ENGLAND
 Tel: +44 (01205) 311500 Fax: +44 (01205) 358013
 email: sales@adanltd.co.uk website: www.adanltd.co.uk



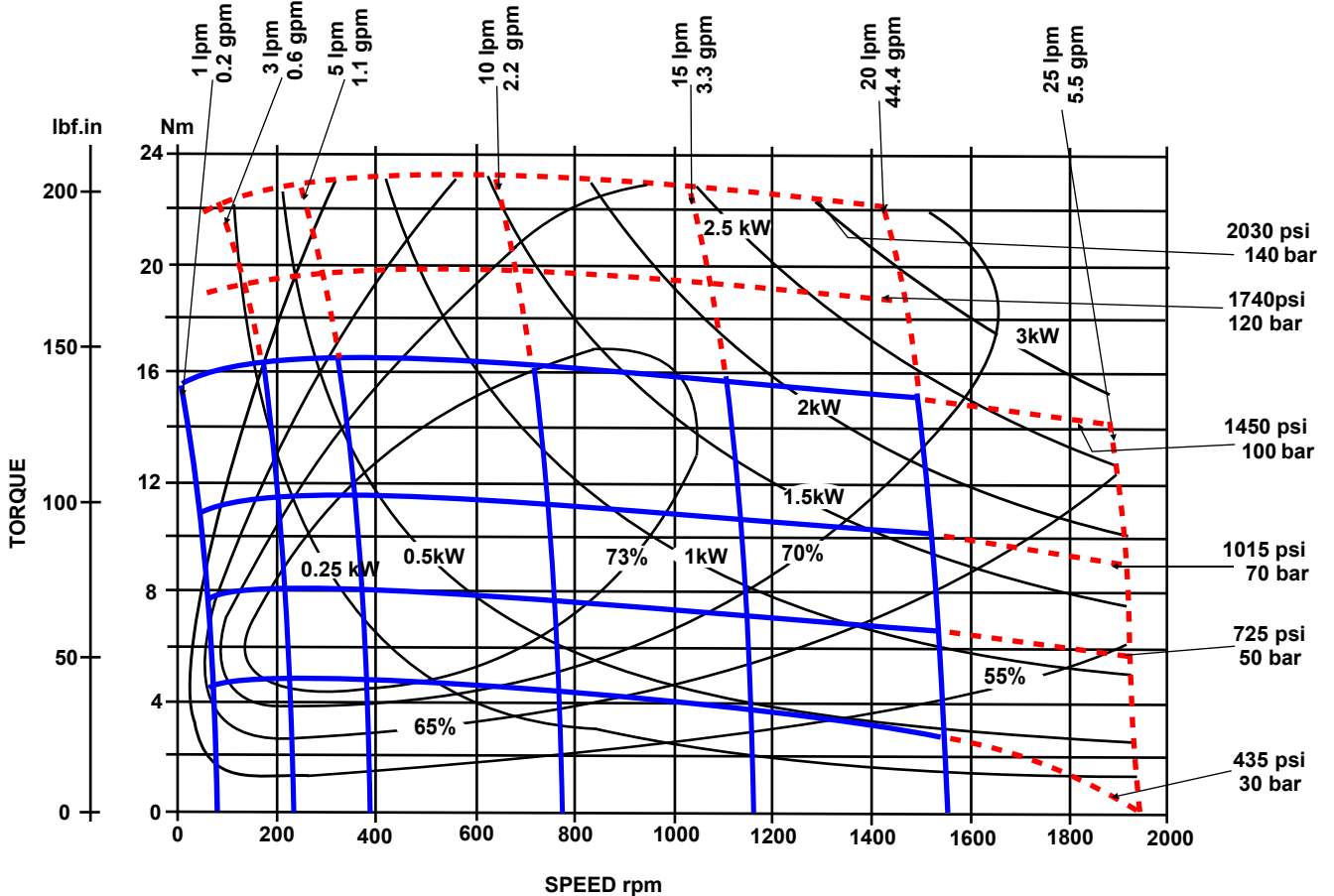
PERFORMANCE GRAPHS

Solid lines represent continuous operation. Dotted lines represent intermittent operation. Intermittent operation = 10% of every minute. Maximum pressure drop and maximum speed must not occur simultaneously

AMM 08



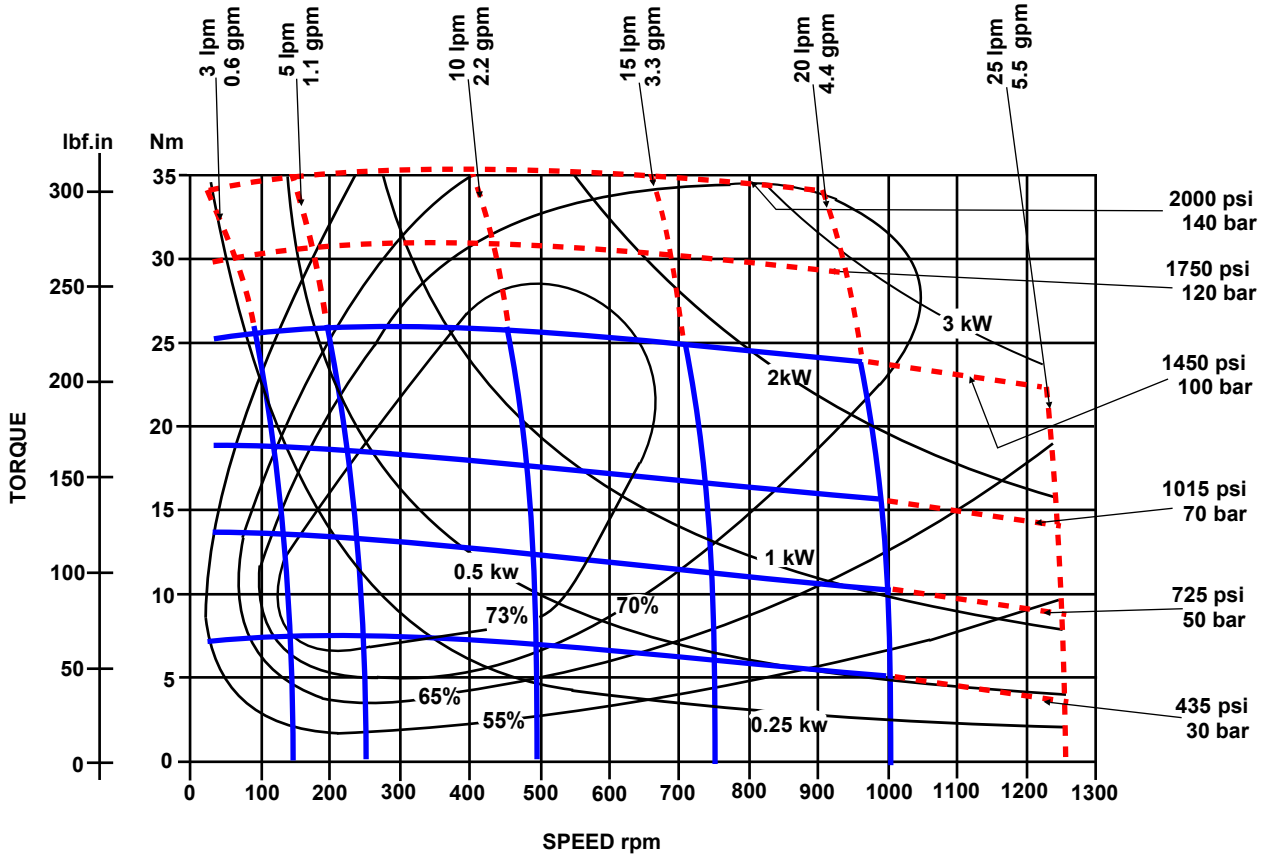
AMM 12.5



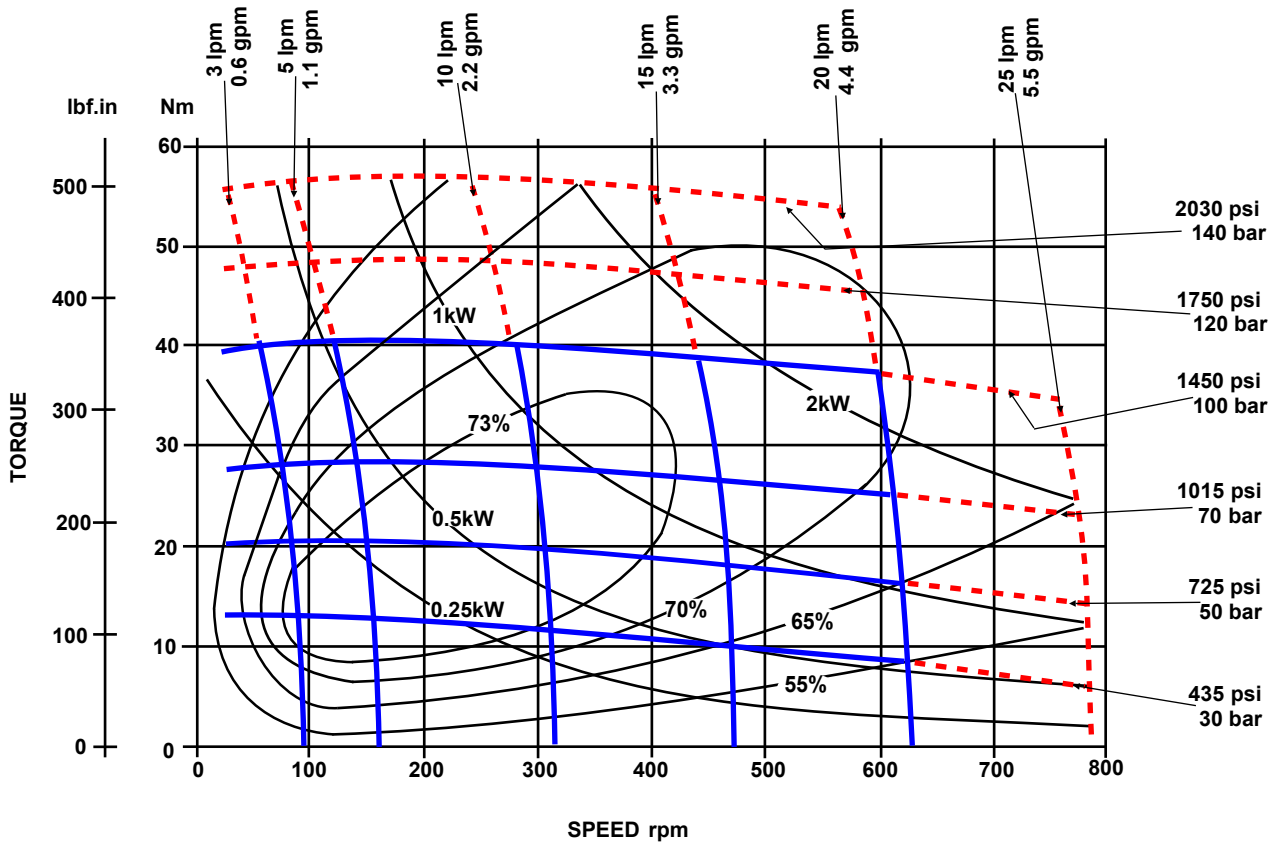
PERFORMANCE GRAPHS

Solid lines represent continuous operation. Dotted lines represent intermittent operation. Intermittent operation = 10% of every minute. Maximum pressure drop and maximum speed must not occur simultaneously.

AMM 20



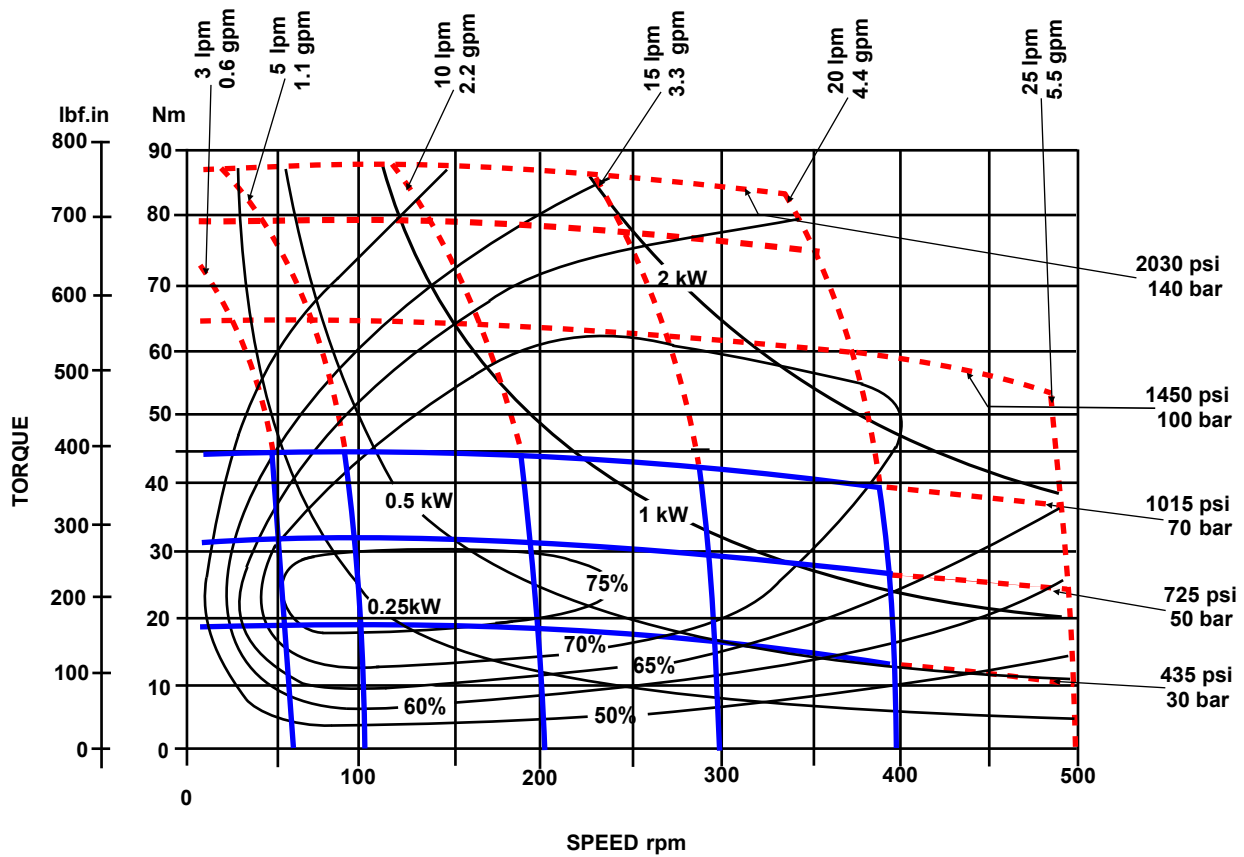
AMM 32



PERFORMANCE GRAPHS

Solid lines represent continuous operation. Dotted lines represent intermittent operation. Intermittent operation = 10% of every minute. Maximum pressure drop and maximum speed must not occur simultaneously.

AMM 50



The policy of Adan Limited is one of continual development and the right is reserved to alter specifications without notice.



ADAN LIMITED

RIVERSIDE IND. ESTATE BOSTON LINCOLNSHIRE ENGLAND
 Tel: +44 (01205) 311500 Fax: +44 (01205) 358013
 email: sales@adanltd.co.uk website: www.adanltd.co.uk

